

# VSP Series



## Standard specifications

### Structure

- Drive: Direct drive motor
- Gas seal: V-ring
- Main material: G-PP

Operating temperature range: 0 to 80°C

Rotating direction: Clockwise

(When viewed from the motor side)

Flange: Equivalent to JIS 10K FF

Motor: 2-pole induction motor of general-purpose flange type for outdoor use

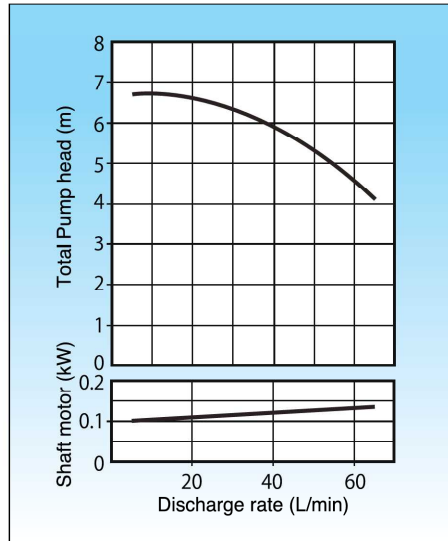
## Model identification

**VSP - 025 1 F 0A A Z**

① ② ③ ④ ⑤ ⑥ ⑦

- ① Name
- ② Nozzle diameter
- ③ Frame No. 1: 50 Hz 2: 60 Hz
- ④ O-ring material  
F: FPM E: EPDM Z: Other
- ⑤ Motor output:  
OA: 0.2 kW OO: 0.4 kW
- ⑥ Body material: A: G-PP
- ⑦ Customized specification:  
Z: Using non-standard parts

## 50 Hz/60 Hz model capacity chart



## Features

- Compact, light-weight weight: 12 kg
- Discharge pipe connection can be changed. (Prefabricated joint is available.)
- Pump installation and replacement are easy.

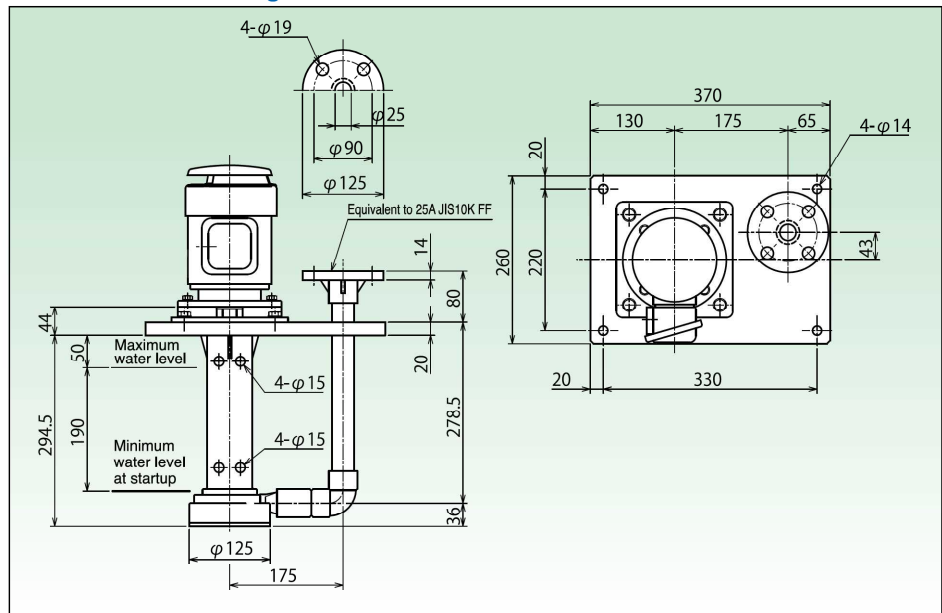
## Standard specifications (Same for 50/60 Hz)

Discharge rate	Total pump head
50 L/min	5 m

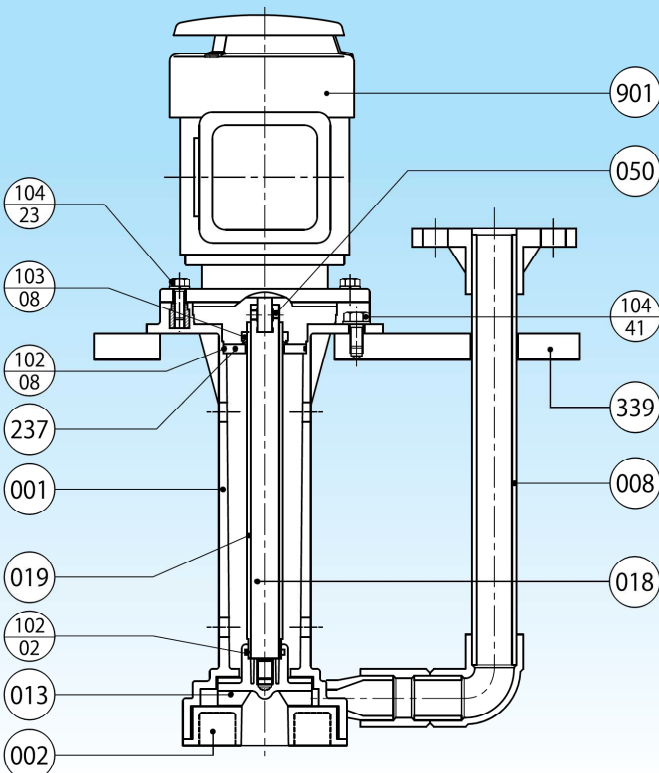
## Applications

- For circulation of chemicals in etching machines, etc.
- For circulation of plating liquids such as nickel and copper
- For circulation of pickling liquids for wire drawing
- For circulation of liquids for small scrubbers
- Applicable for liquid feed from pits, etc.

## Dimensional drawing



## Cross-section structural drawing



Part No.	Part name	Material	Q'ty
001	Casing (Main body)	G-PP	1
002	Casing cover	G-PP	1
008	Discharge pipe	PP	1
013	Impeller	G-PP	1
018	Main shaft	SUS420J2	1
019	Shaft sleeve	PP	1
050	Main shaft set screw	SUS304	2
102-02	O-ring (Impeller)	FPM/EPDM	1
102-08	O-ring (Gas seal plate)	EPDM	1
103-08	Gas seal	FPM	1
104-23	Motor bolt	SUS304	4
104-41	Head plate bolt	SUS304	4
237	Gas seal plate	C-PTFE	1
339	Bed plate	PP	1
901	Motor		1