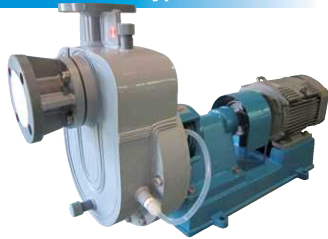


PVC mechanical seal pumps (Self-suction type SEL)

SEL series

Self-suction type

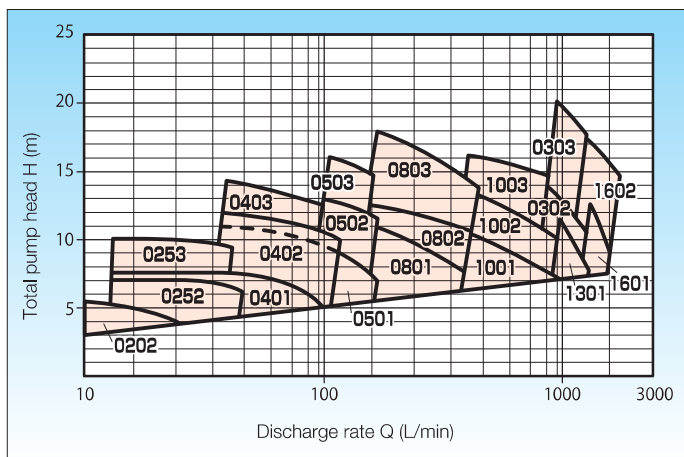


These self-suction pumps features the corrosion resistance of PVC. The SEL series has an extensive track record in applications for wastewater treatment and liquid chemical circulation.

Standard specifications

Structure	Drive: Motor direct-driven type Shaft seal: Mechanical seal Impeller: Semi-open type Bearing: Oilless sealed ball bearing
Operating temperature range	PVC: 0 to 50°C
Rotating direction	Clockwise (When viewed from motor side)
Flange	Equivalent to JIS 10K FF
Motor	General-purpose horizontal motor with base
Paint color	Equivalent to Munsell 2.5B4/8 (Metal exposed parts, except for pump shaft)

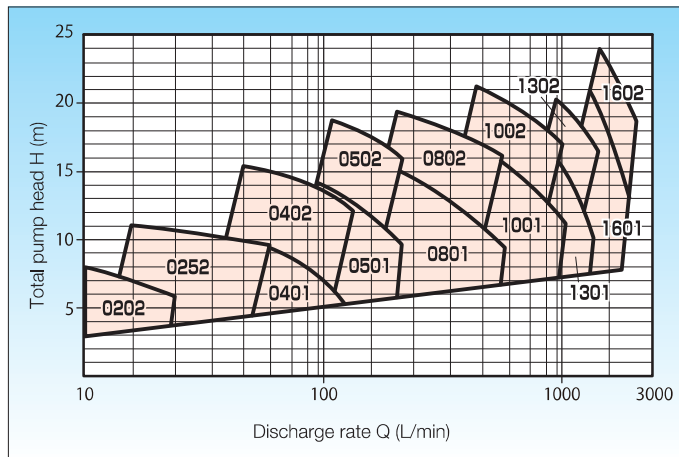
Capacity chart and specification table: 50 Hz (1450/2900 rpm)



Model	Bore diameter (Suction × Dis.) (mm)	4P			Frame No.
		Discharge rate (L/min)	Total head (m)	Motor output (kW)	
SEL-0202	20×20	20	5	0.4	0.5
SEL-0251	25×25	45	6.5	0.75	1.2
SEL-0253	25×25	45	9.5	0.75	1.2
SEL-0401	40×40	110	5	0.75	1.2
SEL-0402	40×40	110	9	1.5	1.2
SEL-0403	40×40	110	12.5	1.5	1.2
SEL-0501	50×50	190	7.5	1.5	1.2
SEL-0502	50×50	190	12	2.2	3.5
SEL-0503	50×50	190	15	3.7	3.5
SEL-0801	80×80	420	8	2.2	3.5
SEL-0802	80×80	420	11	3.7	3.5
SEL-0803	80×80	420	15	5.5	3.5
SEL-1001	100×100	750	8	3.7	3.5
SEL-1002	100×100	750	10	5.5	7.5
SEL-1003	100×100	750	15	7.5	7.5
SEL-1301	125×125	1250	10	7.5	7.5
SEL-1302	125×125	1250	12	11	7.5
SEL-1303	125×125	1250	19	15	7.5
SEL-1601	150×150	1900	10	11	7.5
SEL-1602	150×150	1900	16	15	7.5

Motor output is given for liquids with a specific gravity of 1.0 at the target point.

Capacity chart and specification table: 60 Hz (1750/3500 rpm)



Model	Bore diameter (Suction × Dis.) (mm)	4P			Frame No.
		Discharge rate (L/min)	Total head (m)	Motor output (kW)	
SEL-0202	20×20	20	7	0.4	0.5
SEL-0253	25×25	50	10	0.75	1.2
SEL-0401	40×40	130	6	0.75	1.2
SEL-0402	40×40	130	13	1.5	1.2
SEL-0501	50×50	230	11	2.2	1.2
SEL-0502	50×50	230	17	3.7	3.5
SEL-0801	80×80	500	11	3.7	3.5
SEL-0802	80×80	500	17	5.5	3.5
SEL-1001	100×100	900	12	7.5	3.5
SEL-1002	100×100	900	17.5	11	7.5
SEL-1301	125×125	1500	12	11	7.5
SEL-1302	125×125	1500	17	15	7.5
SEL-1601	150×150	2300	15	22	7.5
SEL-1602	150×150	2300	21	22	7.5

Motor output is given for liquids with a specific gravity of 1.0 at the target point.

Model identification

SEL - 100 1 F 15 S A 1 1

① ② ③ ④ ⑤ ⑥ ⑦ ⑧ ⑨

- ① Name
- ② Bore diameter
- ③ Frame No.
- ④ O-ring material F: FPM E: EPDM Z: Other
- ⑤ Motor output
 - 01 : 0.75 kW 02: 1.5 kW 03 : 2.2 kW
 - 05 : 3.7 kW 07: 5.5 kW 10 : 7.5 kW
 - 15 : 11 kW 20: 15 kW 25 : 18.5 kW
 - 30 : 22 kW
- ⑥ Body material (Casing, casing cover, etc.)
 - S: PVC
 - R: PVC + FRP reinforcement (For casing only)
 - Z: Other

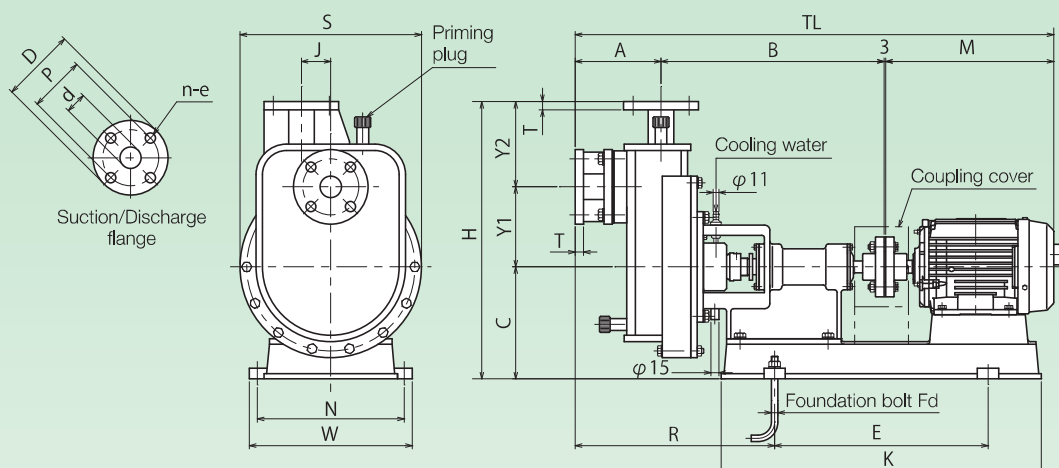
- ⑦ Shaft seal structure
- ⑧ Shaft seal type

- ⑨ Shaft seal configuration

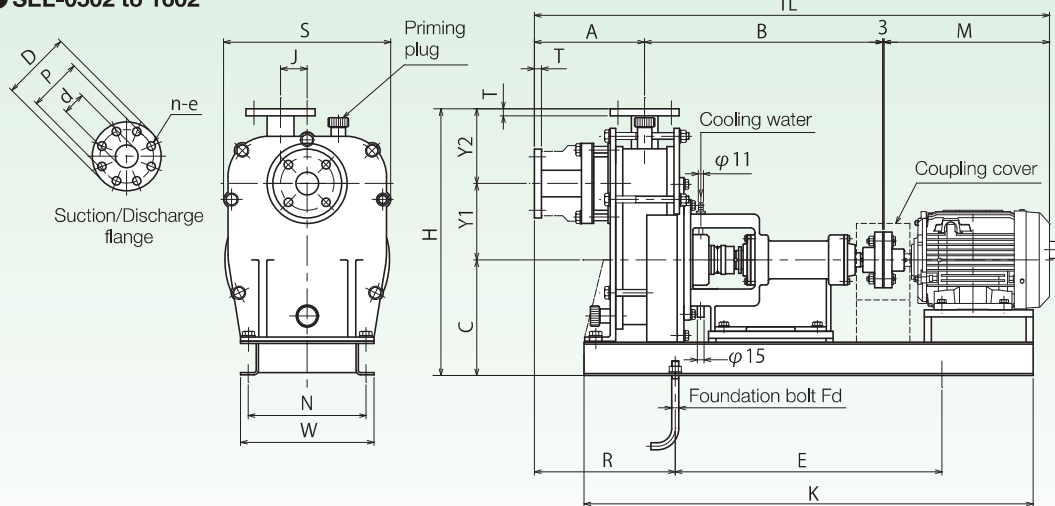
A: External mechanical seal	B: Internal mechanical seal		
0: Standard	0: Standard		
1: MA1	1: MB1		
W: MAW	2: MB1Q1		
	3: MB1Q2		
	D: DEM		
Standard		MA1 / DEM	
Rotating ring	Stationary ring	Rotating ring	Stationary ring
C: Carbon	Carbon	1: Resin-impregnated carbon	Alumina
Z: Ceramic	Carbon-contained PTFE	4: Filler-contained PTFE	Alumina
		6: SiC	SiC
* Double mechanical seal and dead-end types: SiC only			

Outer dimensions drawing and table

● SEL-0202 to 0501



● SEL-0502 to 1602

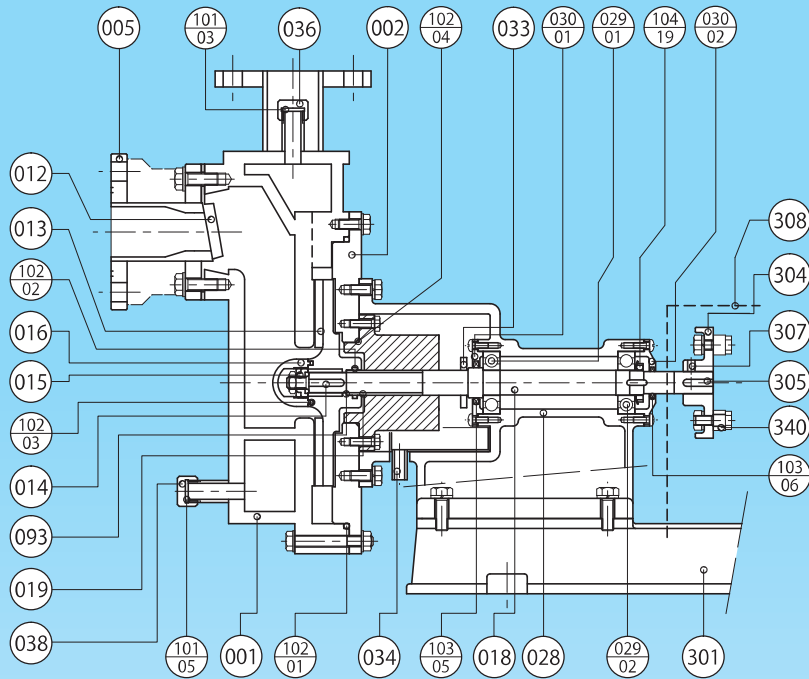


Model	Nominal diameter (A)	Body											Base					Flange JIS 10K					Bearing No.	Body weight (kg)
		A	B	R	J	S	C	H	Y1	Y2	M	TL	E	K	N	W	Fd	d	p	D	n-e	T		
SEL-0202	20	147	309	314	40	245	170	400	100	130	236.5	695.5	295	435	215	240	4-M10x125Lx40b	20	75	100	4-15	14	6304ZZ	38
SEL-0252	25	154	422	371	50	300	210	490	140	140	268.5	847.5	400	600	275	305	4-M12x160Lx50b	25	90	125	4-19	14	6305ZZ	70
SEL-0253	25	154	422	371	50	300	210	490	140	140	268.5	847.5	400	600	275	305	4-M12x160Lx50b	25	90	125	4-19	14	6305ZZ	70
SEL-0401	40	174	422	391	50	300	210	490	140	140	268.5	867.5	400	600	275	305	4-M12x160Lx50b	40	105	140	4-19	16	6305ZZ	70
SEL-0402	40	161	418	374	55	340	210	520	150	160	319	901	400	600	275	305	4-M12x160Lx50b	40	105	140	4-19	16	6305ZZ	75
SEL-0403	40	161	418	374	55	340	210	520	150	160	319	901	400	600	275	305	4-M12x160Lx50b	40	105	140	4-19	16	6305ZZ	75
SEL-0501	50	181	418	394	55	340	210	520	150	160	350	952	400	600	275	305	4-M12x160Lx50b	51	120	155	4-19	16	6305ZZ	75
SEL-0502	50	248	536	317	60	376	260	600	172	168	374	1161	600	1010	265	300	4-M16x200Lx63b	51	120	155	4-19	16	6307ZZ	145
SEL-0503	50	248	536	317	60	376	260	600	172	168	374	1161	600	1010	265	300	4-M16x200Lx63b	51	120	155	4-19	16	6307ZZ	145
SEL-0801	80	248	536	317	60	376	260	610	172	178	374	1161	600	1010	265	300	4-M16x200Lx63b	77	150	185	8-19	18	6307ZZ	145
SEL-0802	80	264	550	262	70	396	270	650	180	200	443	1260	805	1105	265	300	4-M16x200Lx63b	77	150	185	8-19	18	6307ZZ	175
SEL-0803	80	264	550	262	70	396	270	650	180	200	443	1260	805	1105	265	300	4-M16x200Lx63b	77	150	185	8-19	18	6307ZZ	175
SEL-1001	100	264	550	262	70	396	270	660	180	210	481	1298	805	1105	265	300	4-M16x200Lx63b	100	175	210	8-19	18	6307ZZ	175
SEL-1002	100	274	757	328	80	438	325	755	210	220	595	1629	1000	1450	310	350	4-M16x200Lx63b	100	175	210	8-19	18	6309ZZ	270
SEL-1003	100	274	757	328	80	438	325	755	210	220	481	1515	1000	1450	310	350	4-M16x200Lx63b	100	175	210	8-19	18	6309ZZ	270
SEL-1301	130	284	757	338	80	438	325	765	210	230	595	1639	1000	1450	310	350	4-M16x200Lx63b	125	210	250	8-23	20	6309ZZ	270
SEL-1302	130	302	774	338	100	514	375	845	220	250	639	1718	1000	1500	340	400	4-M16x200Lx63b	125	210	250	8-23	20	6309ZZ	355
SEL-1303	130	302	774	338	100	514	375	845	220	250	639	1718	1000	1500	340	400	4-M16x200Lx63b	125	210	250	8-23	20	6309ZZ	355
SEL-1601	160	302	774	338	100	514	375	855	220	260	655	1734	1000	1500	340	400	4-M16x200Lx63b	146	240	280	8-23	22	6309ZZ	355
SEL-1602	160	324	787	383	100	588	411	941	240	290	693	1807	1000	1590	390	450	4-M16x200Lx63b	146	240	280	8-23	22	6309ZZ	420

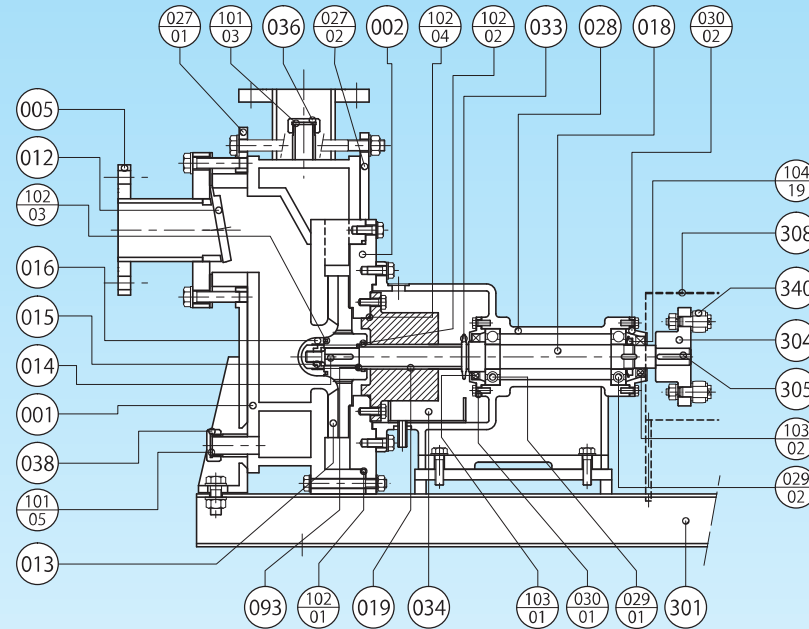
Note: Dimensions of M and TL apply to standard specifications, which slightly vary depending on motor manufacturers. The motor weight is not included in the body weight.

Cross-sectional drawing

● SEL-0202 to 0501



● SEL-0502 to 1602



Part No.	Part name	Material	Q'ty
001	Casing	PVC	1
002	Casing cover	PVC	1
005	Suction pipe	PVC	1
012	Flap valve	FPM/EPDM	1
013	Impeller	HTPVC	1
014	Impeller key	SUS304	2
015	Impeller nut	SUS304	1 set
016	Impeller nut cover	HTPVC	1
018	Shaft	SUS420J2	1
019	Shaft sleeve	HTPVC	1
027-01	Tie ring (Front)	FC200	1
027-02	Tie ring (Rear)	FC200	1
028	Bracket	FC200	1
029-01	Bearing (Pump)	SUJ2	1
029-02	Bearing (Motor)	SUJ2	1
030-01	Bearing cover (Pump)	FC200	1
030-02	Bearing cover (Motor)	FC200	1
033	Deflector	EPDM	1
034	Drain pan	PVC	1
036	Priming plug	PVC	1

Part No.	Part name	Material	Q'ty
038	Drain plug	PVC	1
093	Adjusting liner	SUS304	1 set
101-03	Gasket (Priming plug)	FPM/EPDM	1
101-05	Gasket (Drain plug)	FPM/EPDM	1
102-01	O-ring (Casing)	FPM/EPDM	1
102-02	O-ring (Impeller)	FPM/EPDM	1
102-03	O-ring (Impeller nut)	FPM/EPDM	1
102-04	O-ring (Stuffing box)	FPM/EPDM	1
103-01	Oil seal (Pump)	NBR	1
103-02	Oil seal (Motor)	NBR	1
103-05	Felt seal (Pump)	Felt	1
103-06	Felt seal (Motor)	Felt	1
104-19	Bearing nut and washer	SS400	1 set
301	Base	FC200	1 set
304	Coupling	SS400	1 set
305	Coupling key	SS400	1
307	Coupling set screw	SCM	1 set
308	Coupling guard	SS400	1
340	Pin and rubber (Coupling)	SS400 & NBR	1 set