

FTB • FTB-CL FEATURES

FRP TURBO BLOWER

MODEL FTB



Model FTB FRP Turbo Blower can solve problems involving corrosion resistance to acids and alkalis, humidity, polluted air and so forth.

• Oil lubricated bearing unit

The bearing unit has a high attrition rate. Use of oil lubrication has made possible safe and uninterrupted operation. Oil lubrication ensures

- Improved lubrication.
- Leak-proof shaft sealing construction prevents infiltration of dirt and water from the exterior.
- Easy inspection maintenance.
- Easy alignment.
- Elimination of arduous grease replacement.

• Corrosion resistance enhancement attachment

The casing/bracket attachment method employed plays an essential role in enhancing corrosion resistance. Corrosion resistance has been further bolstered through the elimination of pin holes by adopting an exterior casing attachment instead of the insert or overlay method.

• Pursuit of total safety

- The FRP molded belt cover ensures safety during operation.
- The inspection window equipped belt cover facilitates check against belt looseness.
- Casing inspection of interior of fan.

Typical applications:

- As a corrosive gas fan/blower in a chemical or pharmaceutical plant
- As a corrosive gas fan/blower for emissions treatment equipment and gas absorbing towers
- As a corrosive gas fan/blower in a sewage plant and a human-waste treatment plant
- As a corrosive gas fan/blower in a semiconductor fabrication plant
- As a fan /blower to eliminate coastal salt pollution

Model FTB-CL is the optimal blower for sending high-concentration gaseous chlorine.

MODEL FTB-CL

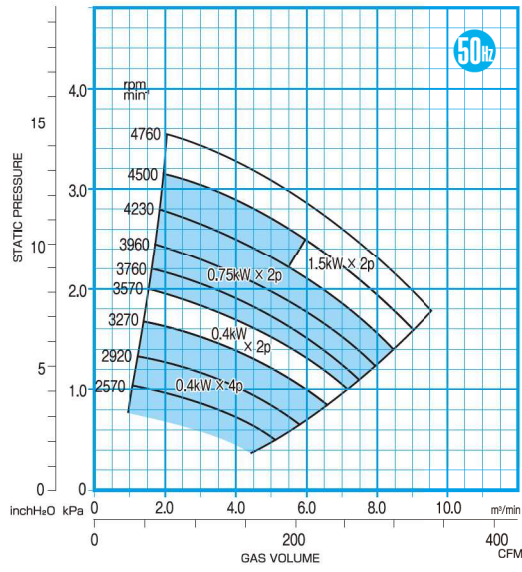
Model FTB-CL blower was developed in order to correspond to high-concentration chlorine. This blower has adopted the impeller made from titanium, and the casing made from FRP in order to bear gaseous chlorine with high corrosiveness. Also, the water-seal type gland sealing is adopted to prevent a gas leak completely.



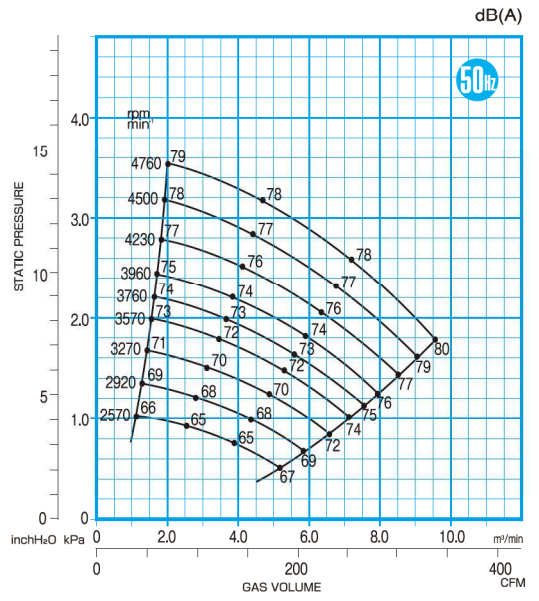
FTB 50Hz CAPACITY RANGE CHART

FTB202B

CAPACITY RANGE CHART

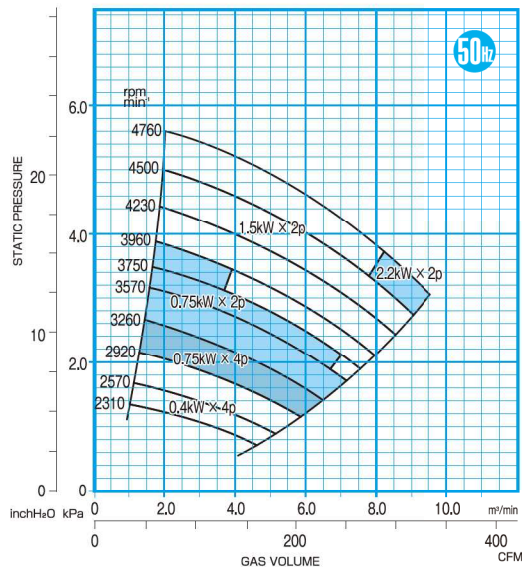


SOUND LEVEL

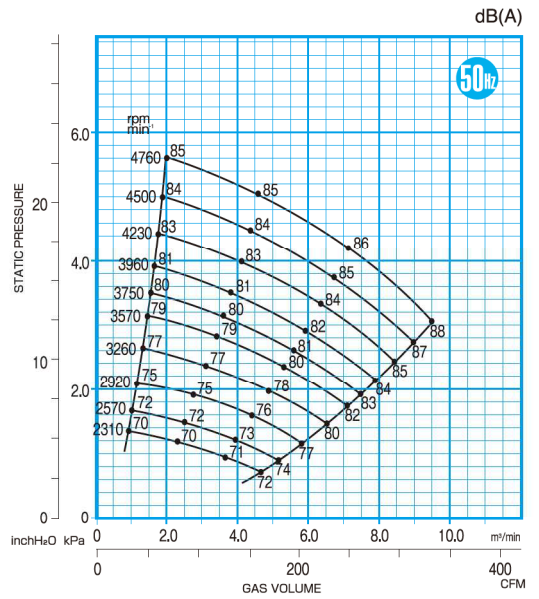


FTB251B

CAPACITY RANGE CHART



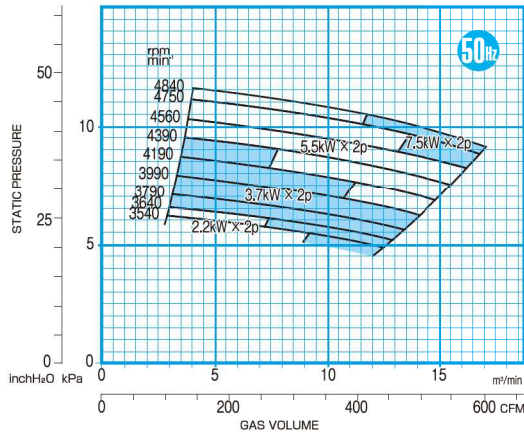
SOUND LEVEL



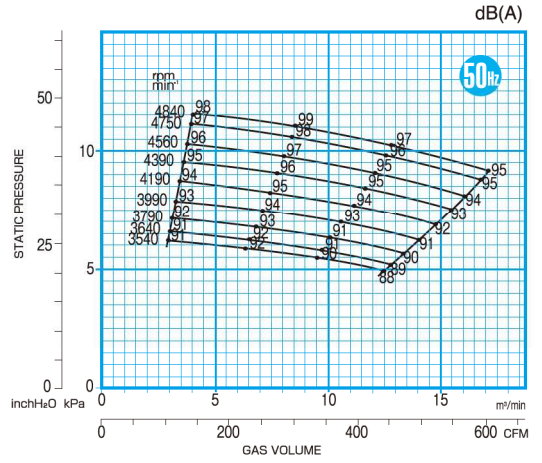
FTB 50Hz CAPACITY RANGE CHART

FTB352E

CAPACITY RANGE CHART

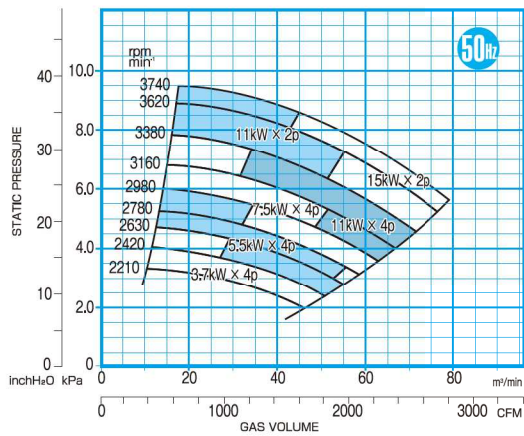


SOUND LEVEL

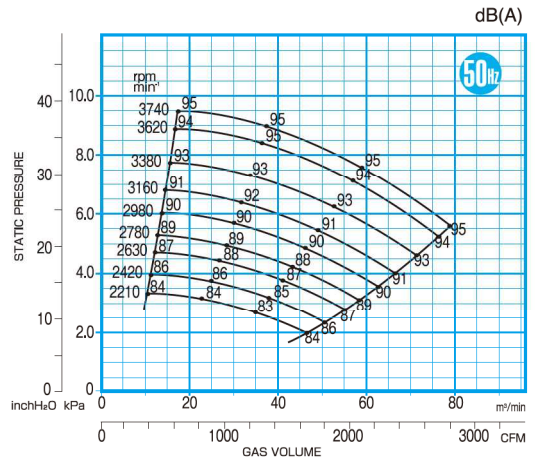


FTB401E

CAPACITY RANGE CHART

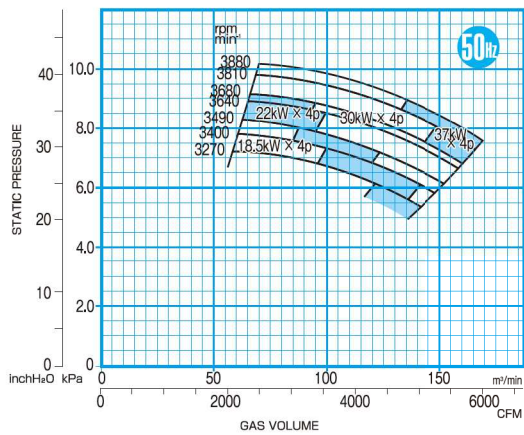


SOUND LEVEL

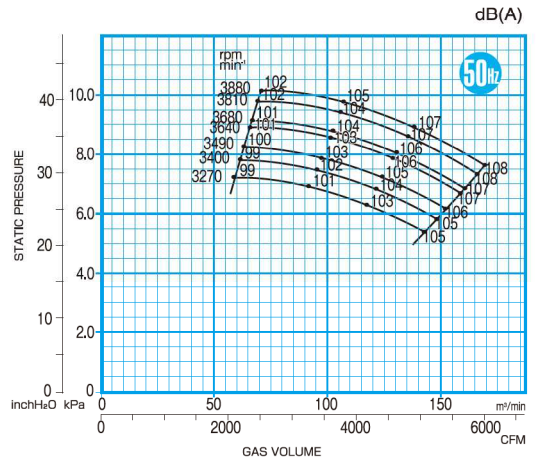


FTB403E

CAPACITY RANGE CHART

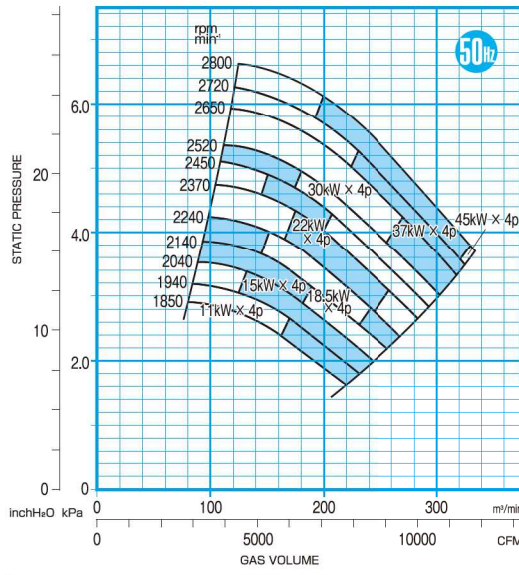


SOUND LEVEL

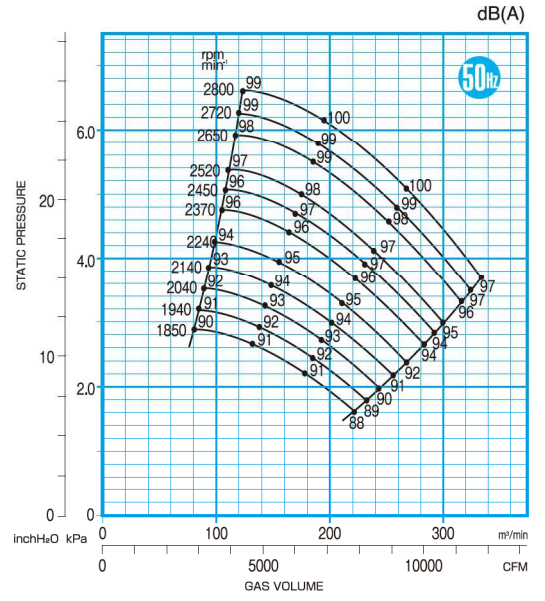


FTB501B

CAPACITY RANGE CHART

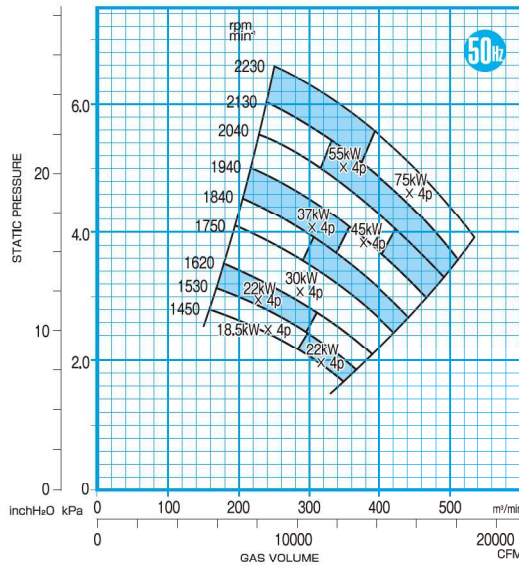


SOUND LEVEL

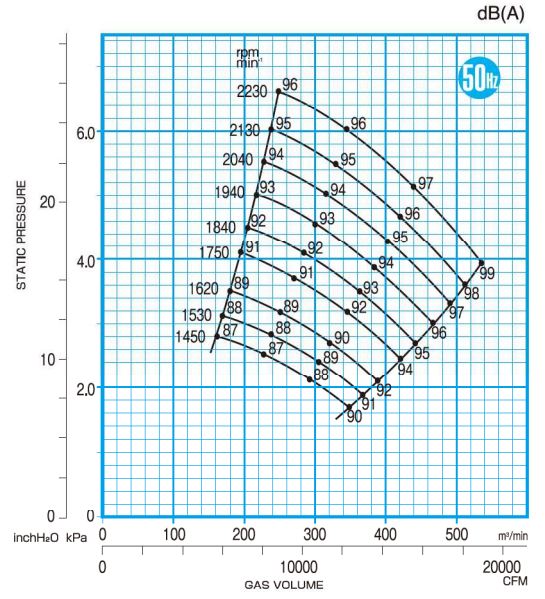


FTB601B

CAPACITY RANGE CHART

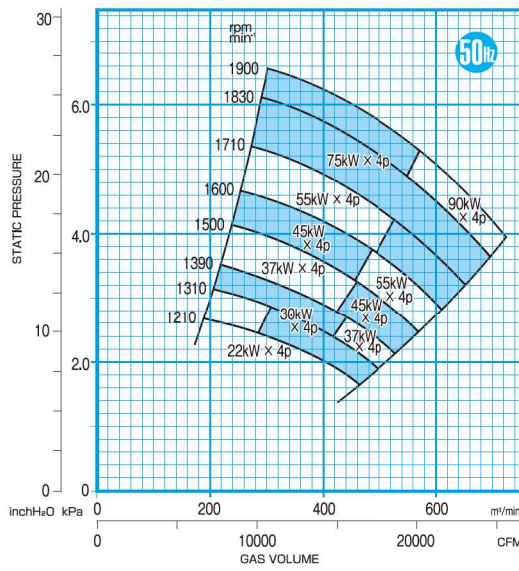


SOUND LEVEL

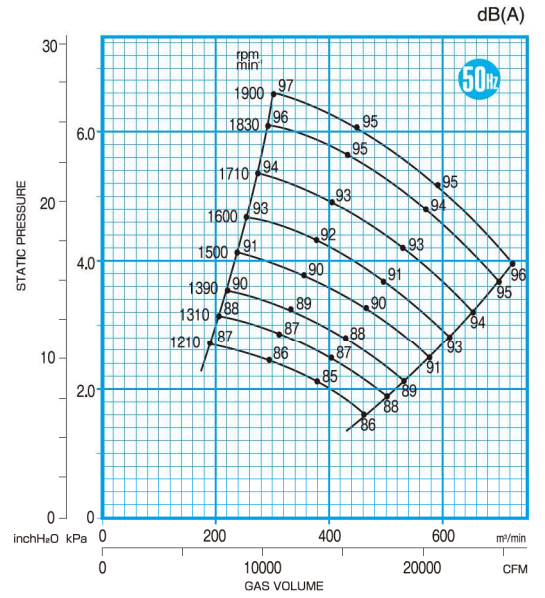


FTB701B

CAPACITY RANGE CHART



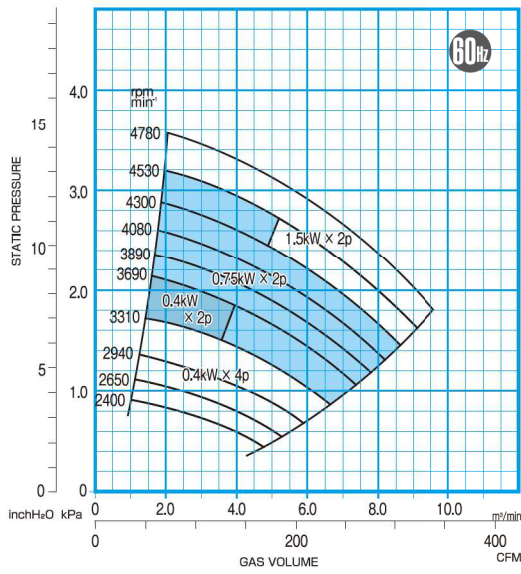
SOUND LEVEL



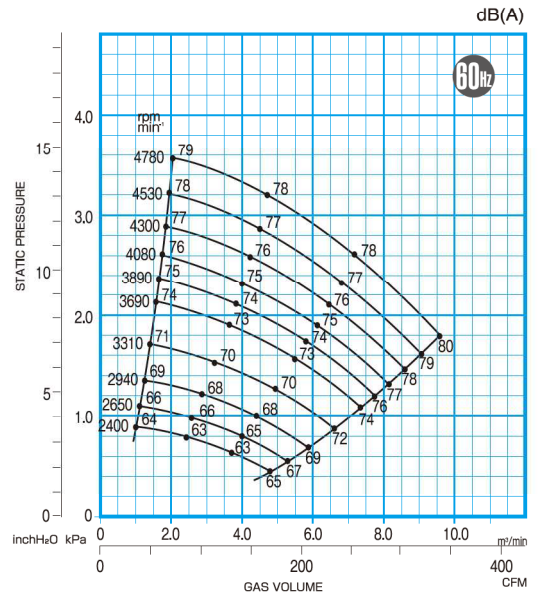
FTB 60Hz CAPACITY RANGE CHART

FTB202B

CAPACITY RANGE CHART

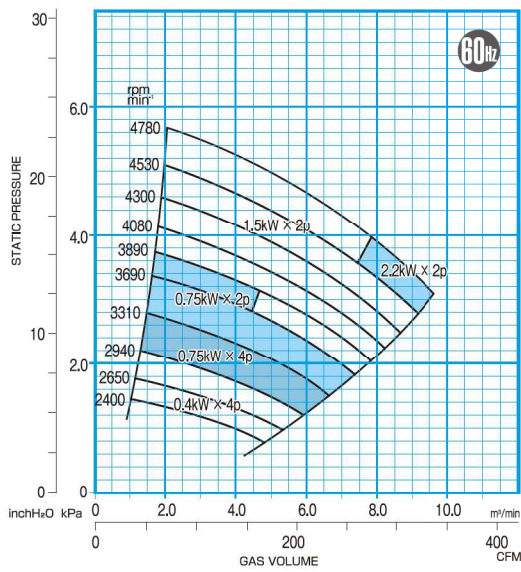


SOUND LEVEL

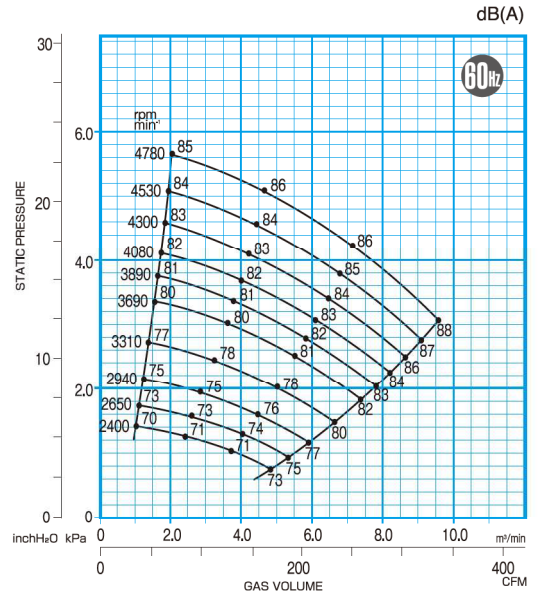


FTB251B

CAPACITY RANGE CHART

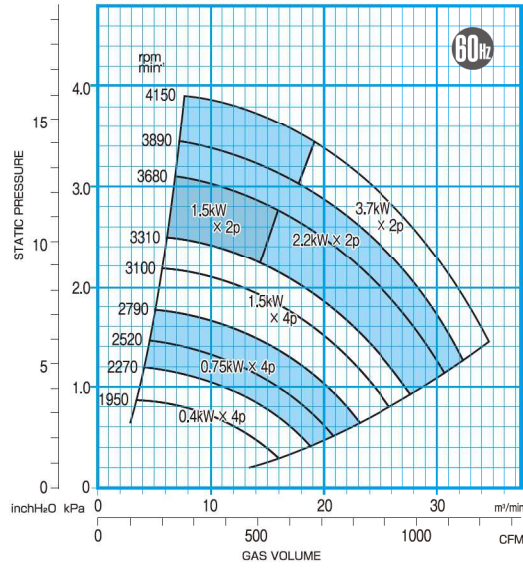


SOUND LEVEL

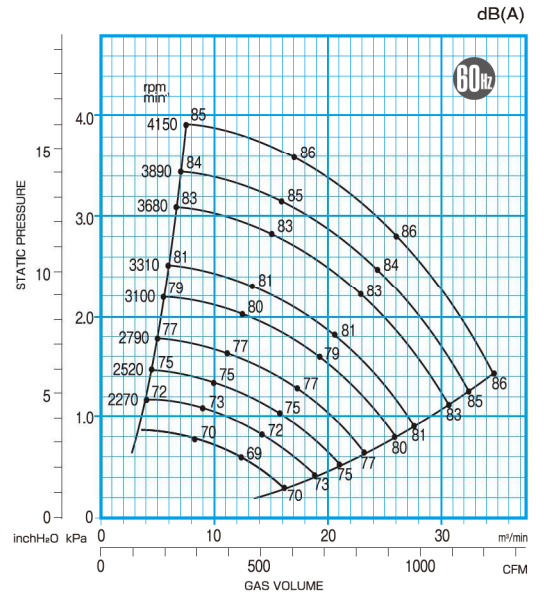


FTB252B

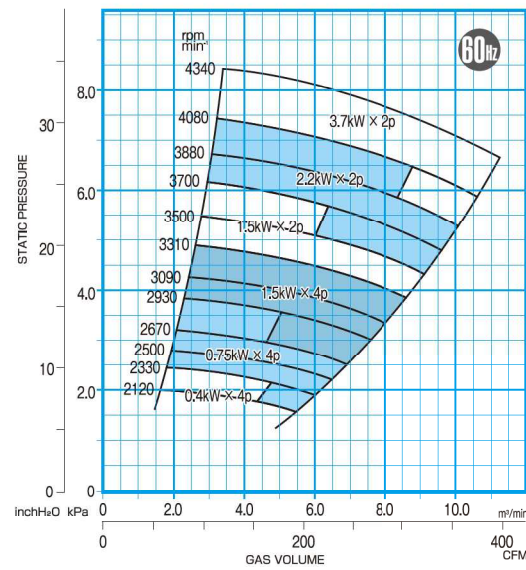
CAPACITY RANGE CHART



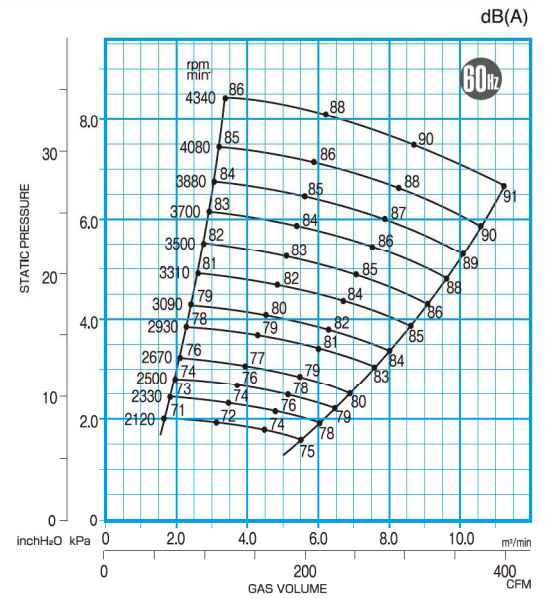
SOUND LEVEL



CAPACITY RANGE CHART



SOUND LEVEL

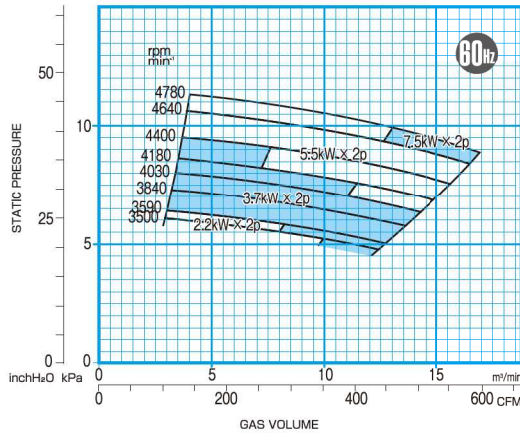


FTB301E

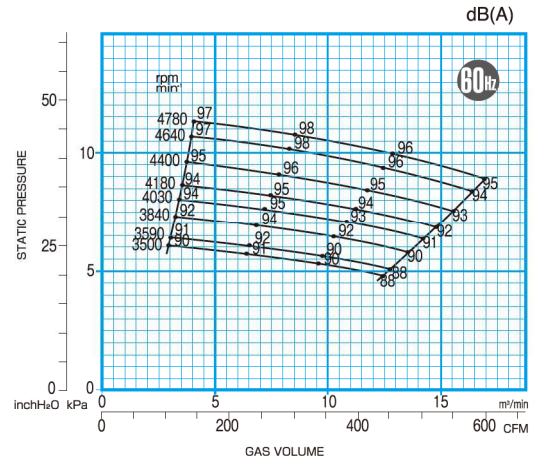
FTB 60Hz CAPACITY RANGE CHART

FTB352E

CAPACITY RANGE CHART

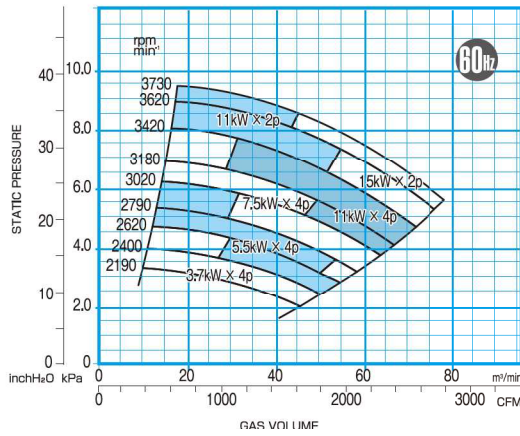


SOUND LEVEL

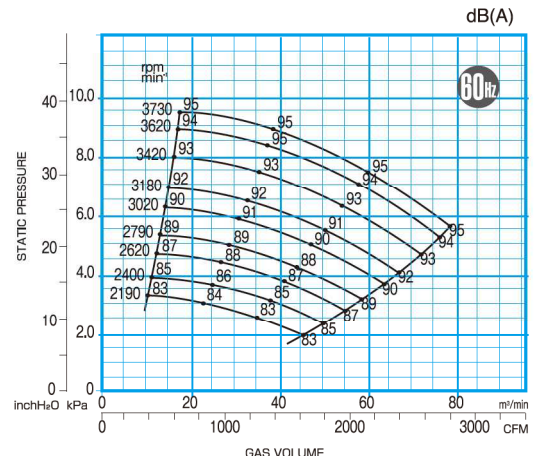


FTB401E

CAPACITY RANGE CHART

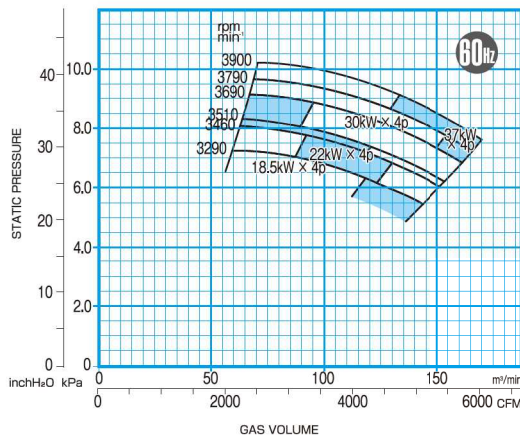


SOUND LEVEL

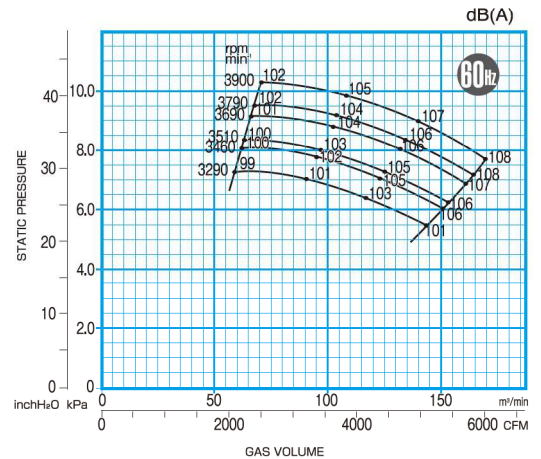


FTB403E

CAPACITY RANGE CHART

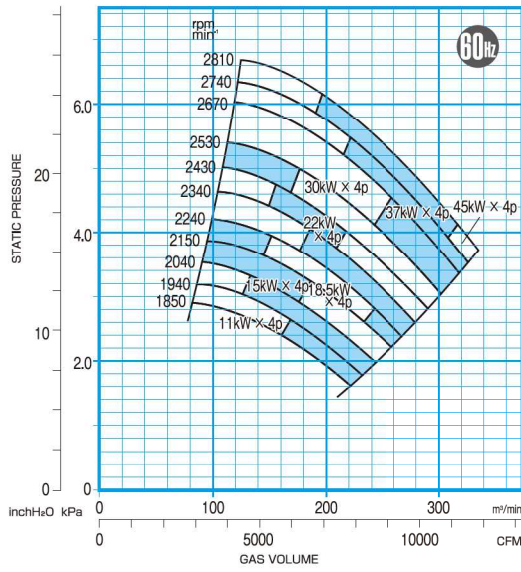


SOUND LEVEL

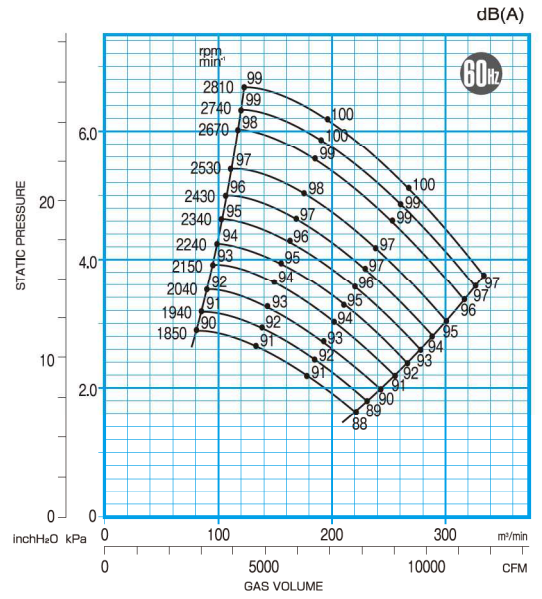


FTB501B

CAPACITY RANGE CHART

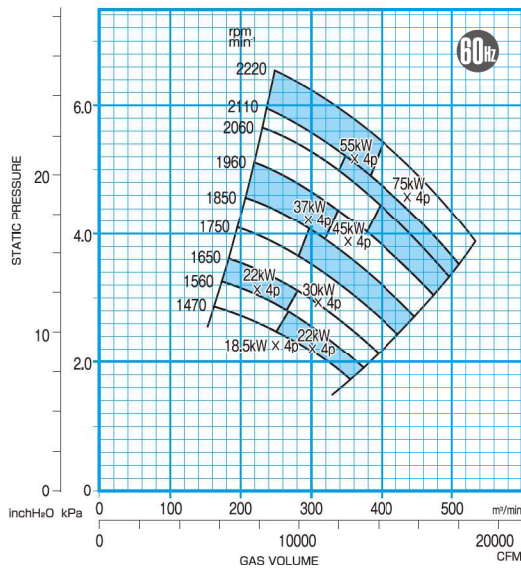


SOUND LEVEL

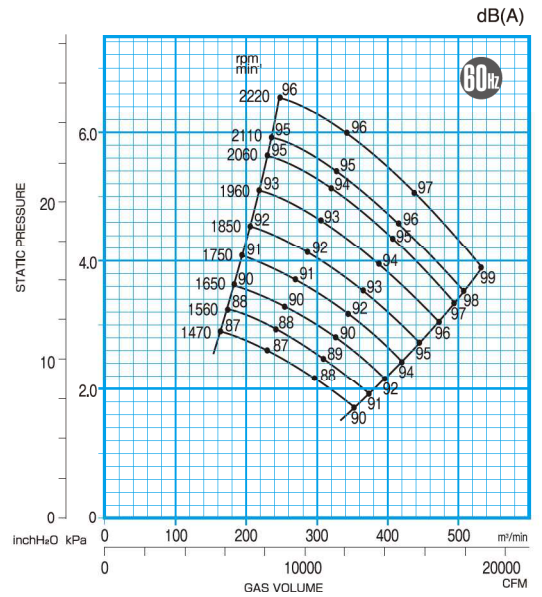


FTB601B

CAPACITY RANGE CHART

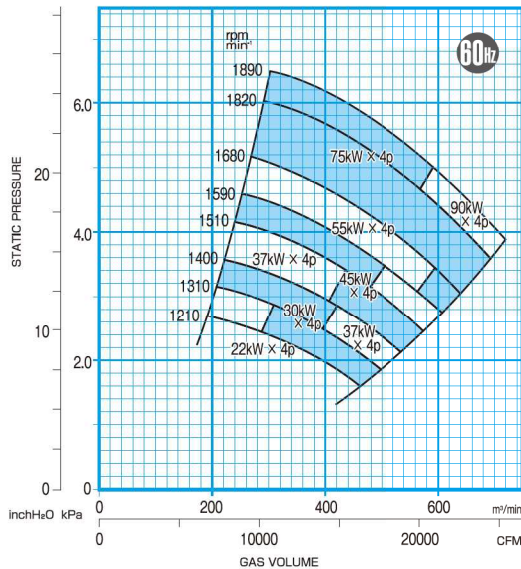


SOUND LEVEL

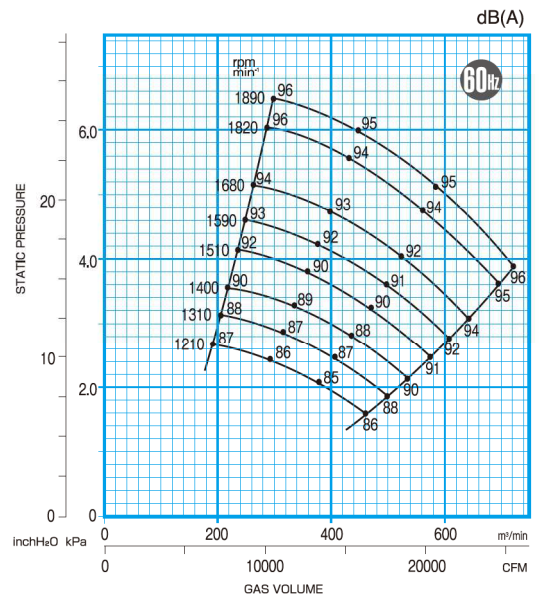


FTB701B

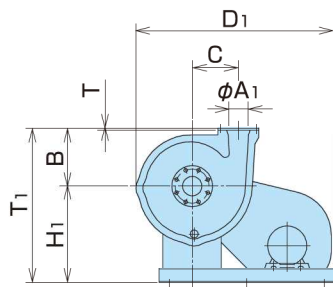
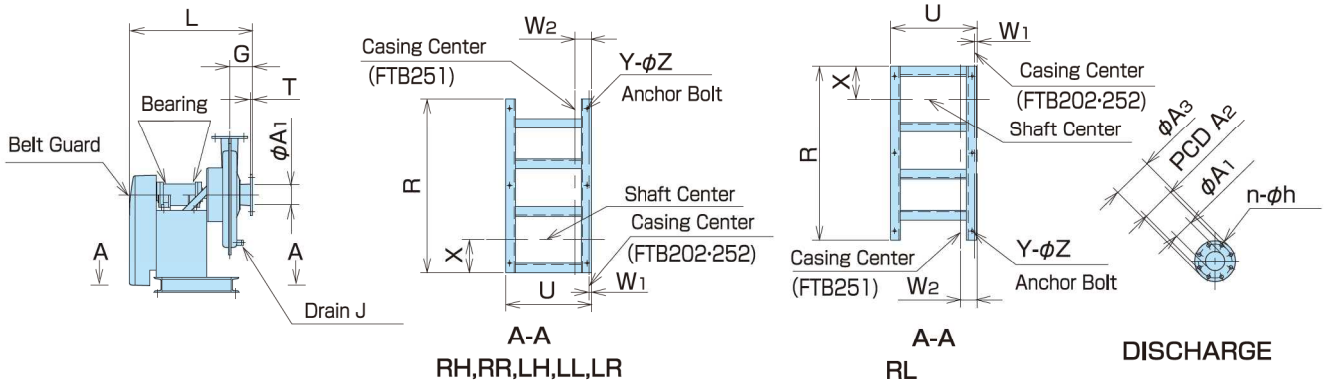
CAPACITY RANGE CHART



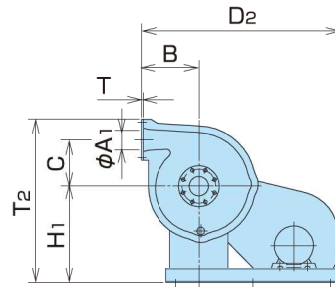
SOUND LEVEL



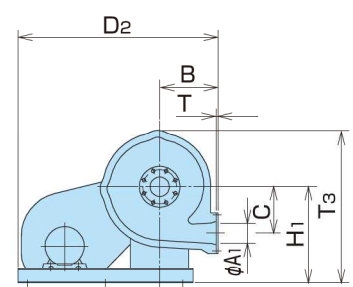
FTB202B·251B·252B



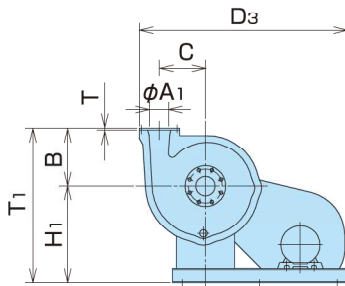
RH1



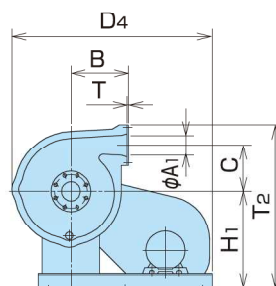
RR1



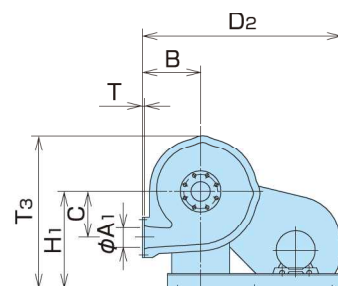
RL2



LH1



LL1



LR1

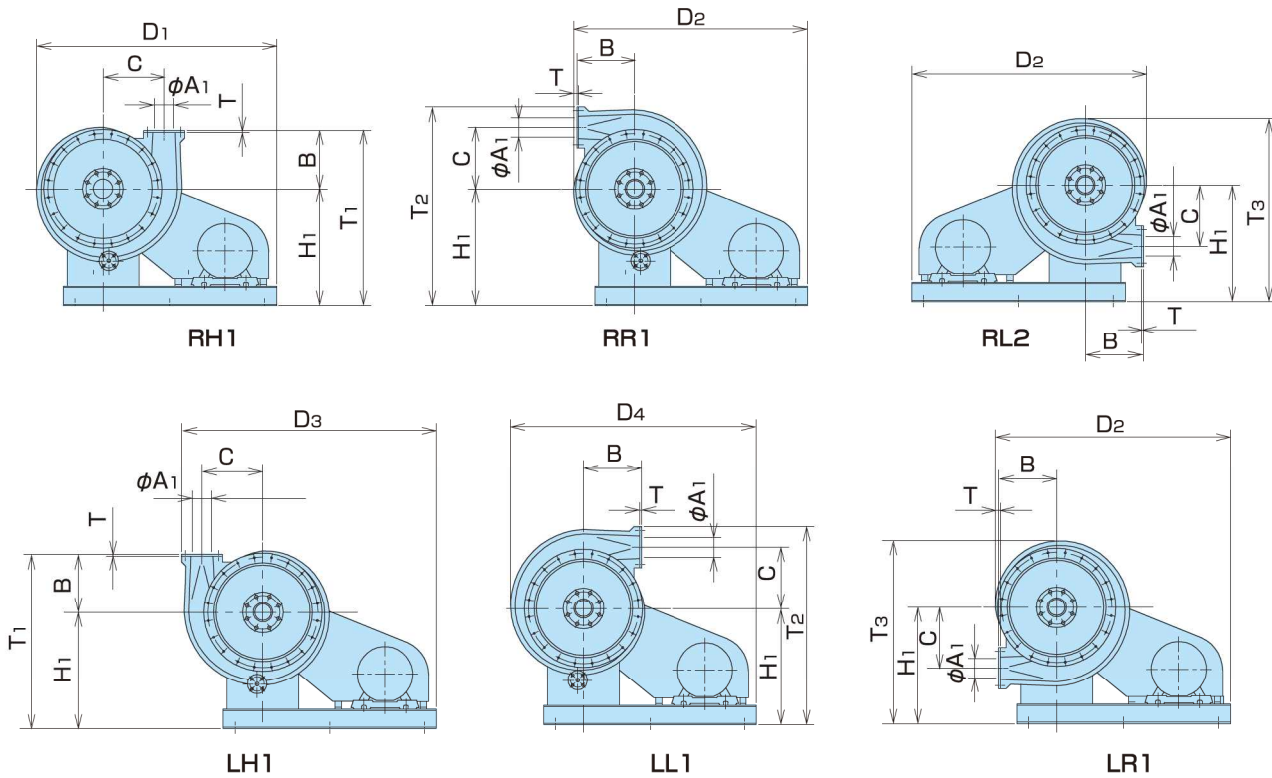
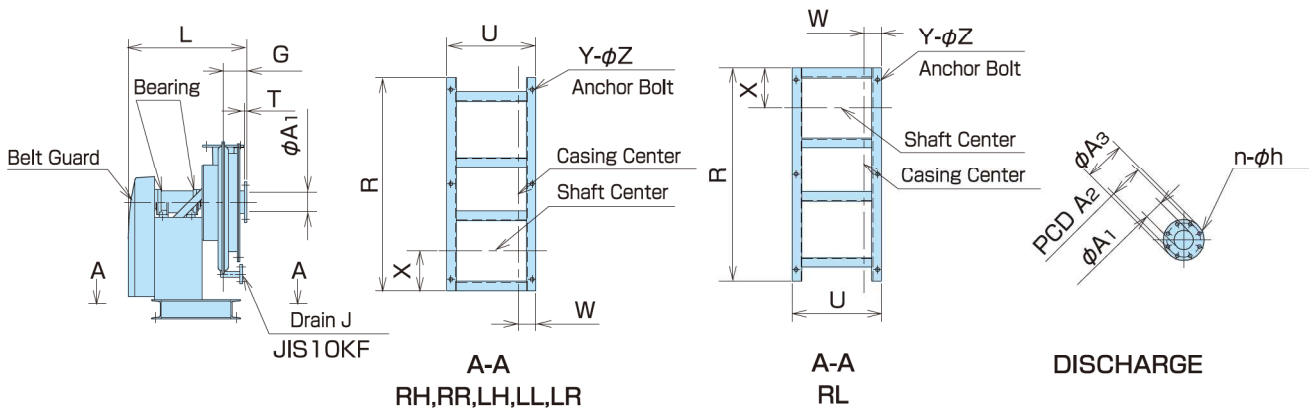
MODEL	CASING BODY											FLANGES						
	L	H ₁	B	C	D ₁	D ₂	D ₃	D ₄	T ₁	T ₂	T ₃	G	ϕA_1	PCD A ₂	ϕA_3	n	h	T
FTB202B	520	400	260	205	858	860	910	880	660	710	658	110	100	175	210	8	19	10
FTB251B	620	525	300	238	1020	1030	1073	1037	825	868	815	117	100	175	210	8	19	10
FTB252B	710	525	320	286	1074	1050	1181	1114	845	976	869	160	200	290	330	12	23	15

MODEL	DRAIN	BASE						BODY WEIGHT(Kg)		BEARING	
	J	R	U	W ₁	W ₂	X	Y	Z	STANDARD	IMPELLER	PULLEY
FTB202B	PF3/4"	740	325	3	-	140	6	12	55	6306	6305
FTB251B	PF3/4"	900	440	-	52	170	6	12	89	6308	6307
FTB252B	PF3/4"	900	440	4	-	170	6	12	94	6308	6307

※BODY WEIGHT : Not Including Motor Weight.

DIMENSIONS

FTB301E · 352E · 401E

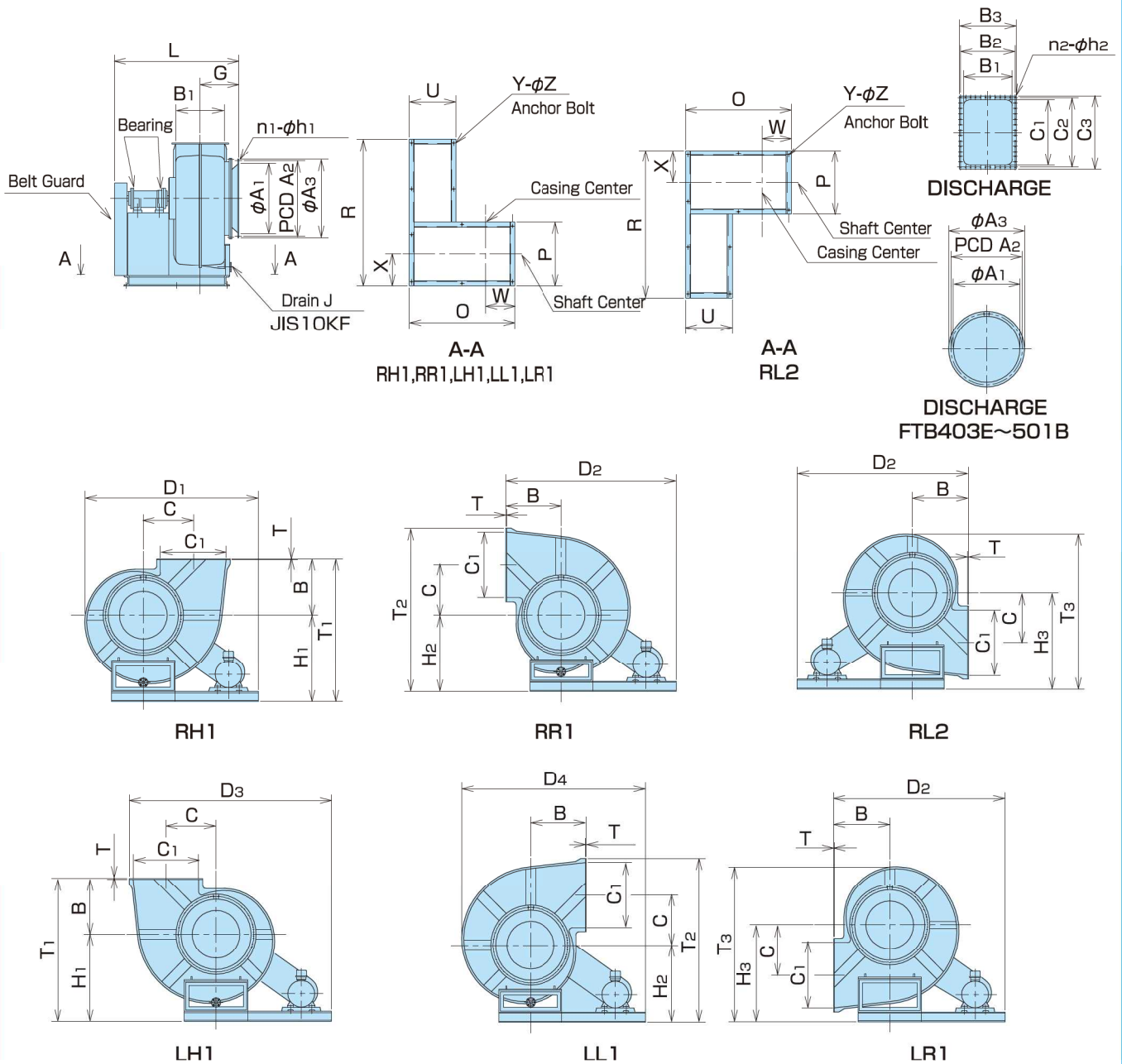


MODEL	CASING BODY											FLANGES						
	L	H_1	B	C	D_1	D_2	D_3	D_4	T_1	T_2	T_3	G	ϕA_1	PCD A_2	ϕA_3	n	h	T
FTB301E	610	600	300	315	1237	1211	1315	1271	900	1020	942	120	100	175	210	8	19	10
FTB352E	725	725	350	370	1446	1416	1545	1488	1075	1220	1121	150	125	210	250	8	23	15
FTB401E	805	725	400	430	1496	1460	1680	1548	1125	1355	1171	190	250	355	400	12	25	15

MODEL	DRAIN		BASE					BODY WEIGHT(Kg)		BEARING	
	J	R	U	W	X	Y	Z	STANDARD	IMPELLER	PULLEY	
FTB301E	20A	1100	460	90	205	6	14	110	6308	6307	
FTB352E	25A	1300	560	126	250	6	14	179	6310	6308	
FTB401E	25A	1300	560	85	250	6	14	204	6310	6308	

※BODY WEIGHT : Not Including Motor Weight.

FTB403E·501B·601B·701B

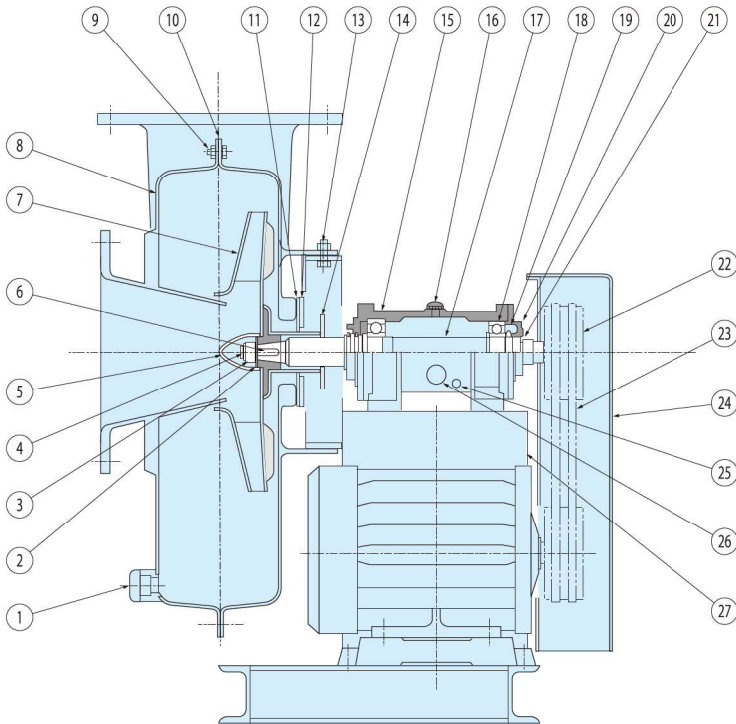


MODEL	CASING BODY														FLANGES				
	L	H ₁	H ₂	H ₃	B	C	D ₁	D ₂	D ₃	D ₄	T ₁	T ₂	T ₃	G	φA ₁	PCD A ₂	φA ₃	n ₁	h ₁
FTB403E	1210	900	900	900	500	545	1860	1775	2065	1950	1400	1690	1485	300	350	445	490	16	25
FTB501B	1385	950	950	1100	550	600	2025	1950	2338	2135	1500	1888	1725	400	500	620	675	20	27
FTB601B	1625	1150	1150	1300	650	760	2495	2375	2845	2635	1800	2270	2070	450	600	680	720	24	14
FTB701B	1725	1300	1300	1450	750	885	2620	2475	3020	2780	2050	2595	2345	500	700	780	820	32	14

MODEL	FLANGES						DRAIN		BASE										BODY WEIGHT(Kg)		BEARING	
	B ₁	B ₂	B ₃	C ₁	C ₂	C ₃	n ₂	h ₂	T	J	R	U	O	P	W	X	Y	Z	STANDARD	IMPELLER	PULLEY	
FTB403E	-	-	-	-	-	-	-	-	15	50A	1600	600	925	650	192	325	7	18	380	6315	6313	
FTB501B	-	-	-	-	-	-	-	-	15	50A	1750	600	1110	700	280	350	8	18	450	6315	6313	
FTB601B	500	581	620	600	680	720	30	14	15	50A	2200	700	1370	950	345	475	10	22	745	6320	6318	
FTB701B	600	675	720	700	780	820	38	14	15	50A	2200	700	1470	950	395	475	10	22	925	6320	6318	

※BODY WEIGHT : Not Including Motor Weight.

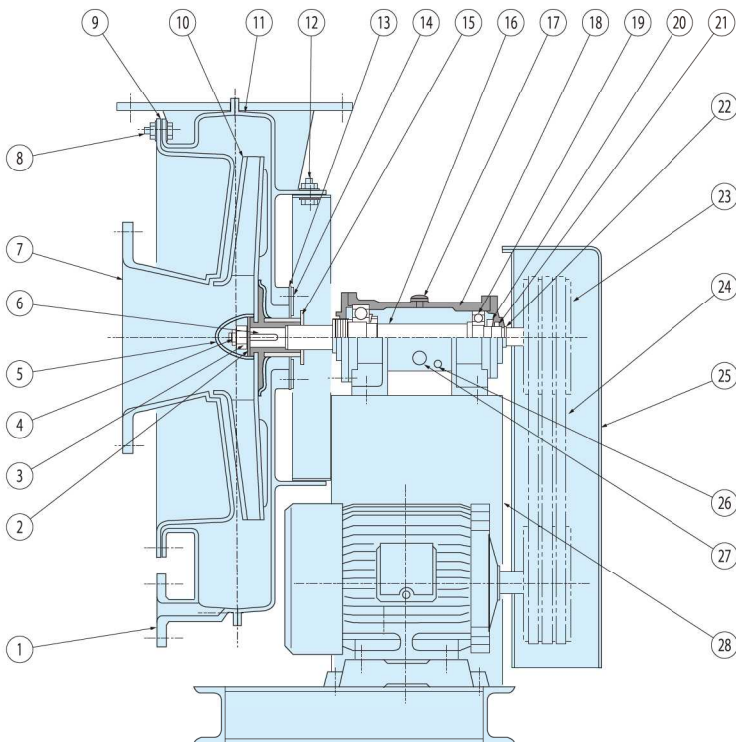
FTB202B·251B·252B



No.	NAME OF PART	MATERIALS	QTY
1	Drain Plug	FRP	1
2	Washer	SS400	1
3	Nut With Groove	S25C	1
4	Split Pin	SWRM6	1
5	Nut Cover	FRP	1
6	Impeller Key	S45C	1
7	Impeller	FRP	1
8	Casing	FRP	1
9	Casing Bolt	SUS304	1set
10	Casing Gasket	EPT	1
11	Seal Plate	PE	1
12	Seal Plate Support	FRP	1
13	Casing Set Bolt	SUS304	1
14	Gas Separator	HTPVC	1
15	Bearing Housing	FCD450	1
16	Oil Supply Plug	PP	1
17	Shaft	S45C	1
18	Bearing	SUJ2	2
19	Bearing Nut & Washer	SS400	2
20	Bearing Cover	FC200	2
21	V-Ring	NBR	2
22	V-Pulley	FC200	1set
23	V-Belt	Rubber	1set
24	V-Belt Guard	FRP	1
25	Oil Plug	SS400	1
26	Oil Gauge	PC	2
27	Base	SS400	1

※No drain plug is attached in case of RL and LR.
Number of belt may vary from that shown in this drawing.

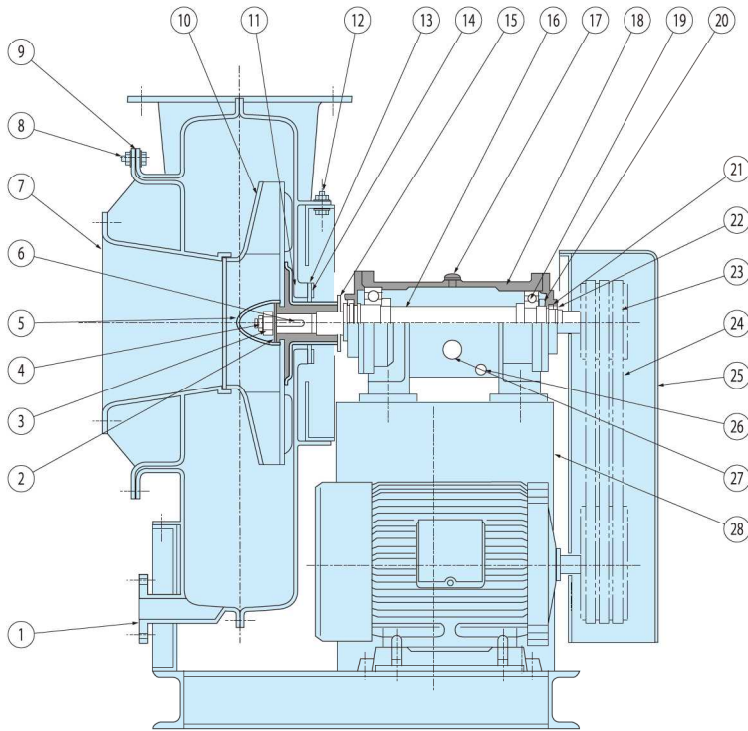
FTB301E·352E·401E



No.	NAME OF PART	MATERIALS	QTY
1	Drain Plug	FRP	1
2	Washer	SS400	1
3	Nut With Groove	S25C	1
4	Split Pin	SWRM6	1
5	Nut Cover	FRP	1
6	Impeller Key	S45C	1
7	Suction Cone	FRP	1
8	Suction Cone Bolt	SUS304	1set
9	Casing Gasket	Chloroprene	1
10	Impeller	FRP	1
11	Casing	FRP	1
12	Casing Set Bolt	SUS304	1set
13	Seal Plate	PE	1
14	Seal Plate Support	FRP	1
15	Gas Separator	HTPVC	1
16	Shaft	S45C	1
17	Oil Supply Plug	PP	1
18	Bearing Housing	FCD450	1
19	Bearing	SUJ2	2
20	Bearing Nut & Washer	SS400	2
21	Bearing Cover	FC200	2
22	V-Ring	NBR	2
23	V-Pulley	FC200	1set
24	V-Belt	Rubber	1set
25	V-Belt Guard	FRP	1
26	Oil Plug	SS400	1
27	Oil Gauge	PC	2
28	Base	SS400	1

※No drain plug is attached in case of RL and LR.
Number of belt may vary from that shown in this drawing.

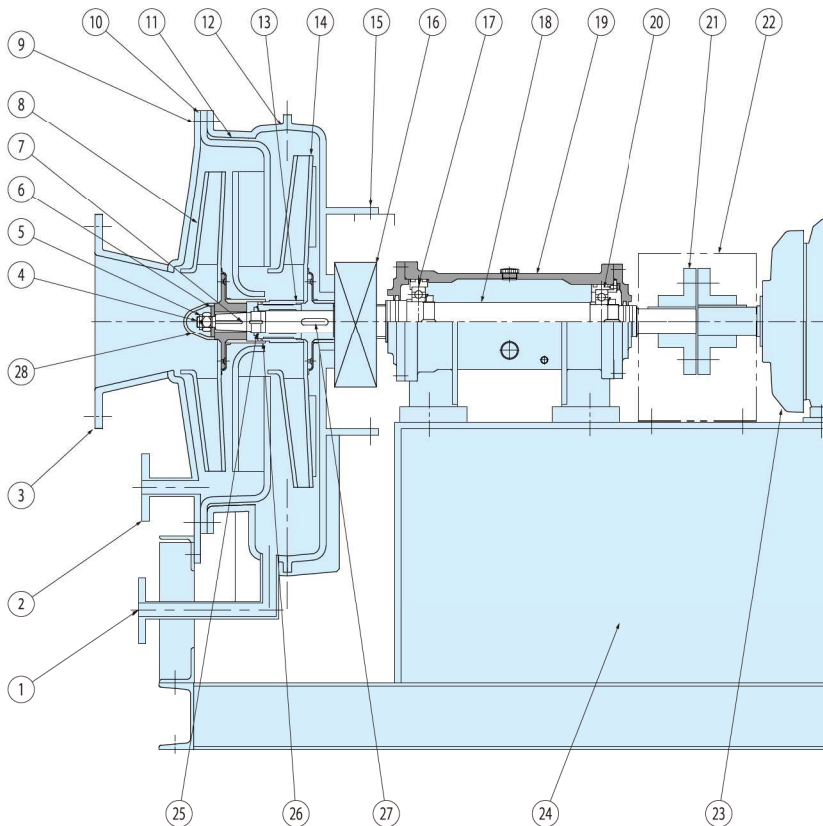
FTB403E·501B·601B·701B



No.	NAME OF PART	MATERIALS	QTY
1	Drain Flange	FRP	1
2	Washer	SS400	1
3	Nut With Groove	S25C	1
4	Split Pin	SWRM6	1
5	Nut Cover	FRP	1
6	Impeller Key	S45C	1
7	Suction Cone	FRP	1
8	Suction Cone Bolt	SUS304	1set
9	Casing Gasket	Chloroprene	1
10	Impeller	FRP	1
11	Casing	FRP	1
12	Casing Set Bolt	SUS304	1set
13	Seal Plate	PE	1
14	Seal Plate Support	FRP	1
15	Gas Separator	HTPVC	1
16	Shaft	S45C	1
17	Oil Supply Plug	PP	1
18	Bearing Housing	FCD450	1
19	Bearing	SUJ2	2
20	Bearing Nut & Washer	SS400	2
21	Bearing Cover	FC200	2
22	V-Ring	NBR	2
23	V-Pulley	FC200	1set
24	V-Belt	Rubber	1set
25	V-Belt Guard	FRP	1
26	Oil Plug	SS400	1
27	Oil Gauge	PC	2
28	Base	SS400	1

※No drain Flange is attached in case of RL and LR.
Number of belt may vary from that shown in this drawing.

FTW



No.	NAME OF PART	MATERIALS	QTY
1	Drain Flange (rear)	FRP	1
2	Drain Flange (front)	FRP	1
3	Suction Cone	FRP	1
4	Split Pin	SWRM6	1
5	Impeller Nut	S25C	1
6	Washer	SS400	1
7	Impeller Key (front)	S45C	1
8	Impeller (front)	FRP	1
9	Casing Bolt	SUS304	1set
10	Gasket	EPT	1set
11	Median Plane	FRP	1
12	Casing	FRP	1
13	Distance Piece	FRP/S25C	1
14	Impeller (rear)	FRP	1
15	Casing Set Bolt	SUS304	1set
16	Gland	-----	1set
17	Bearing	SUJ2	1
18	Shaft	S45C	1
19	Bearing Housing	FCD450	1
20	Bearing	SUJ2	1
21	Coupling	SF440A	1
22	Coupling Cover	SS400	1
23	Motor	-----	1
24	Base	SS400	1
25	Impeller Nut & Washer (R)	SS400	1
26	O-Ring	FPM	1
27	Impeller Key	S45C	1
28	Nut Cover	FRP	1

※No drain Flange is attached in case of RL and LR.